

MC361 Color MFP

OKI[®]
PRINTING SOLUTIONS



The eco-friendly HD Color all-in-one. It increases productivity through superior speed and functionality.



OKI Printing Solutions and The Environment

- ENERGY STAR[®] Compliant** Superior energy efficiency
- Duplex (2-sided) Printing** Saves energy and resources
- Multifunctionality** One device takes the place of many
- Toner Save Mode** Reduces amount of consumables used
- Deep Sleep Mode** Automatically reduces power to <1.5W
- Automatic ECO Mode** Reduces power to save energy
- 1-Piece Image Drum** Reduced use of disposable material





The MC361 MFP: breathtaking color output and superior, cost-efficient performance in print, copy, scan and fax modes.

MC361 Color MFP Highlights:

- Print and copy at speeds up to 23 ppm in color, 25 ppm in black & white¹
- HD Color printing technology for outstanding print and copy quality
- Multi-tasking functionality standard, enabling two tasks to be performed at once
- 3.5" backlit, tilting LCD operator panel with 1-touch fax dialing keys
- PCL® and PostScript® 3™ emulations
- Duplex (2-sided) printing/copying, standard
- Full-featured fax with dual access functionality and 4 MB fax memory²
- Multiple scan-to locations: PC, network, FTP, e-mail or USB memory stick
- Print from USB memory stick
- 50-sheet reversing automatic document feeder (RADF), standard – saves time and energy
- 350-sheet standard paper capacity, expands to 880 sheets with optional 2nd tray
- Banner printing capability on sheets up to 52" in length³
- Color Access Policy Manager controls printing costs by defining usage rules
- Separate CMYK toner cartridges for lower cost of operation
- Compact design to fit even the smallest environment
- ENERGY STAR® compliant
- 1-Year Overnight Exchange limited warranty⁴
- Live, toll-free technical support, 24/7/365⁴

The MC361 Color MFP from OKI Printing Solutions combines speed, reliability and ease of use with high-quality color and four-in-one functionality—all in an affordable desktop device with a footprint small enough to fit easily into your work space. It's the perfect solution for individuals and small workgroups.

Features that enhance productivity – Do more, faster. The MC361 Color MFP prints or copies up to 23 color pages or 25 black & white pages per minute, with the first color page printing in just 9 seconds.¹ It has a reversing automatic document feeder (RADF) that quickly scans both sides of a document. Color duplex printing occurs at 12 ppm, black & white at 13 ppm. And its multi-tasking capabilities let you set up or perform two tasks at the same time.

Versatile scanning capabilities – Use the MC361 Color MFP to turn hard-copy documents into electronic files by placing them in the RADF or directly onto the flatbed scanner, and scanning them in black & white or color. Send a document directly to a locally attached PC or to the shared directory on the network (without the need for additional software), to an e-mail address or to an FTP site. Or simply insert a USB memory stick into the port conveniently located on the front of the unit and save your scan.

Users can also print files from a USB stick, print PDF files with Direct Print without opening an application, and remotely preview and scan via their network connection and TWAIN driver.

The MC361 MFP prints and copies in HD Color, an OKI® exclusive: multi-level printheads and microfine toner provide more detail, greater color depth and reduced grain, for breathtaking output even on ordinary office paper—with Auto Color Balance to ensure color consistency across all jobs.

And, with a duty cycle of up to 45,000 pages per month, this durable device can be relied upon to handle large daily print and copy volumes.

A full-featured fax device – The MC361 Color MFP has dual access functionality that lets you scan faxes into memory while the unit is busy sending or receiving faxes. It also comes with a number of features found in more expensive MFP devices: T.37 Internet faxing, Tel/Fax auto switching, telephone answering device (TAD) interface, distinctive ring to differentiate between incoming fax messages and phone calls, speed-dial ID display, and generous fax memory.

Making your job easier – The MC361 Color MFP is really user friendly. It's network-ready right out of the box and has an intuitive operator panel that's simple to use, with a 3.5" backlit LCD display that tilts up for easy reading.

Expect more support – You can expect total support from your Authorized OKI Printing Solutions MFP provider.

If you need technical assistance, you can speak to a live expert based in North America, 24/7/365, by calling toll-free: **800.OKI.DATA** (800.654.3282).⁴

The MC361 Color MFP lets you convert hard copies to digital files, manage your document workflow, and help the environment.

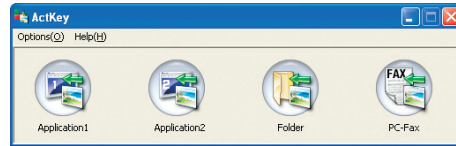
The user-friendly MC361 Color MFP puts its full functionality at your fingertips. The operator panel features a clear, organized array of navigation buttons, a backlit LCD display, alphanumeric keypad, and 1-touch fax dialing keys. A USB port, conveniently located on the front of the unit, allows for scan to/print from a memory stick.

PaperPort® software from Nuance® easily turns piles of paper and photos into PDF and JPEG files—using the MFP’s scanner—and saves them to your computer for future use.

OmniPage® from Nuance—optical character recognition (OCR) software—quickly turns hard-copy office documents and forms into electronic files for easy editing, searching and sharing.

Desktop Capture Solution—works through PaperPort’s Active Directory Authentication to move scanned documents into your SharePoint® or DocuWare® workflow, quickly and easily.⁵

Document management made simple – The MC361 Color MFP includes ActKey software that lets you move between scan-to tasks—including Scan-to-Folder, Scan-to-Application and Scan-to-PC Fax—with a single click.



Control your effect on the planet’s health – The MC361 Color MFP offers a number of environmentally friendly features, including:

Automatic ECO Mode When you’re only printing a few pages, the MC361 Color MFP’s response is to enter this energy-saving, performance-enhancing setting. Same terrific output, lower power consumption. Everybody wins.

Deep Sleep Mode The MC361 Color MFP takes power-saving even more seriously when left on for an extended period: it slips into a “deep sleep” that expends just over a single watt to maintain.

Mono Resource-Print Mode Even when the color toner runs out, you can still print needed documents in crisp, clear black & white. Simply cancel the original job and select this energy-efficient mode in the printer driver.

One-piece image drum This long-lasting, user-replaceable consumable remains friendly to your budget while lowering the number of items to dispose of and store.

ENERGY STAR® compliance With its lower power consumption—especially in Deep Sleep Mode—and standard duplexing, the MC361 Color MFP meets the government’s standards for energy efficiency.

The MC361 Color MFP at a glance



Easy-to-read and -use operator panel: ergonomically designed to meet the needs of your workflow environment—keeping tasks simple and end users more productive.



Backlit LCD display: tilts up as much as 90°.



Multi-tasking: performs two tasks at the same time

Flatbed scanner: handles up to 8.5" x 11" documents on the glass and up to 8.5" x 14" via the Reversing Auto Document Feeder (RADF)

Backlit LCD display: tilts up for easy reading; simplifies navigation to further enhance user productivity

High Definition Color: printing technology that ensures breathtaking output, even on plain paper

100-sheet multi-purpose tray: also handles 3" x 5" cards, envelopes and banner sheets up to 8.5" x 52"

250-sheet paper tray: fewer user interventions means greater productivity

Dual access: scan faxes into memory while the unit is busy sending or receiving faxes

50-sheet RADF: scans both sides of a sheet; increases user productivity

Alphanumeric keypad: easily enter fax numbers, codes and quantities

Easy-to-access functionality: primary features are simple to locate and access

Scan to/Print from USB memory stick: convenient front port makes these operations quick and easy

Single Pass Color™ technology: straight-through paper path allows for superior flexibility in paper handling

Compact, space-saving design: the small footprint of the MC361 Color MFP allows it to fit into most work spaces

Optional 530-sheet 2nd paper tray: increases maximum paper capacity to 880 sheets

¹ Published performance results based on laboratory testing on simplex sheet (1 side). Individual results may vary.

² Based on ITU-T Test Chart #1.

³ Larger files may require additional memory.

⁴ Available in the U.S. and Canada only.

⁵ Requires optional connectors.

MC361 Color MFP

Specifications

Printer

- **Print Speed:** Up to 23 ppm color, 25 ppm black & white¹
- **Time to First Page:** As fast as 9 seconds in color, 8.5 seconds in black & white¹
- **HD Color Printing Technology:** Combines multilevel LED printheads and microfine toner for sharp detail and rich color depth
- **Print Resolution:** Up to 1200 x 600 dpi
- **Processor Speed:** 533 MHz
- **Duty Cycle:** Up to 45,000 prints/copies per month
- **Duplex (2-Sided) Printing:** Standard
- **Print from USB Memory Stick:** Via front USB port
- **Connectivity:** USB v2.0 high-speed; 10/100 Base-TX Ethernet (network)
- **Emulations:** PCL[®] 5c, PCL 6; PostScript[®] 3™ emulation; SIDM
- **Operating Systems:** 32-/64-bit – Windows[®] 7, Vista[®], XP, Server 2008 and Server 2003; 64-bit – Server 2008 R2; Win 2000; Mac Support – OS 10.3.9 to 10.6
- **Fonts:** Scalable – 86 PCL, 80 PostScript; Bitmap – OCR-A, OCR-B, Line Printer, USPS; Barcode – 12 types + PDF417

Copier

- **Copy Speed:** Up to 23 cpm color, 25 cpm black & white¹
- **First Copy Out:** As fast as 14 seconds in color, 12 seconds in black & white¹
- **Duplex (2-Sided) Copying:** Standard
- **Copy Resolution:** Up to 600 x 600 dpi
- **Copy Scaling:** 25% to 400% in 1% increments; 11 pre-set scaling sizes
- **Copy Quantity Selection:** 1-99
- **ID Card Copy:** Print both sides of ID on one side of sheet

Scanner

- **Scan Type:** Color and black & white flatbed
- **Scan Resolution:** Up to 1200 x 1200 dpi
- **Scan Speed:** 3 sec./page color, 2 sec./page black & white at 300 dpi (simplex)
- **Scan-to-PC:** Create electronic file from hard copy original in PDF, TIFF or JPEG file formats (TWAIN scanning driver included; Windows compatible)
- **Address Book Management:** LDAP (Lightweight Directory Access Protocol)
- **Scan-to Functionality:** Scan to e-mail with LDAP support; to USB memory stick; to FTP sites; to network; and to PC
- **Formats Supported:** PDF, TIFF, JPEG, BMP, PCX, GIF, TGA, PNG, WMF, EMF
- **TWAIN Driver:** Windows 2000 and higher
- **Networking Utilities:** MFP Network Tools – access features and settings of the MFP; set up Scan-to-FTP and Scan-to-Email; apply scanning restrictions; configure and manage multiple Scan-to-FTP profiles

Fax

- **Fax Modem:** 33.6 Kbps Super G3
- **Transmission Speed:** 3 seconds/page²
- **Fax Resolution:** Up to 200 x 400 dpi
- **Speed Dials:** 100 locations
- **Broadcast Transmissions:** Up to 100 locations
- **Fax Memory:** 200 pages² (4 MB)
- **Fax Functions:** Dual access (perform additional functions while sending/receiving), T.37 Internet fax, Tel/Fax auto switching, Telephone answering device (TAD) interface, Distinctive ring, Broadcasting, Manual transmission, Delayed transmission, Auto redial, Auto receive, Activity report, Protocol report (for troubleshooting)

Multi-Tasking

- **Operation:** Set up or perform two tasks at the same time

Operator Panel

- **Features:** 5-line, 3.5" tilting (up to 90°) backlit LCD display; Alphanumeric keypad; Ergonomically designed function keys; 1-touch fax dials (8 x 2 rows = 16)

Document Management

- **Utility Suite:** Nuance[®] PaperPort[®] SE v. 11, OmniPage[®] SE v. 16, OKI LPR, Color Correct, Swatch Utility, ActKey Utility, Network Card Setup Tool, MFP Configuration Tool, TWAIN Driver, Fax Driver, Printer Driver, Job Accounting, PrintSuperVision, Color Access Policy Manager, Desktop Document Capture

System Memory

- **Standard/Max Imaging RAM:** 256 MB/768 MB

Paper Handling

- **Scanner RADF:** Up to 50 letter/legal sheets
- **Paper Sizes (Min./Max.):** Main Tray from 4.1" x 5.8" to 8.5" x 14"; optional 2nd Tray from 5.8" x 8.3" to 8.5" x 14"; Multi-Purpose Tray (MPT) from 3" x 5" cards to 8.5" x 52" banners
- **Standard Input:** 350 sheets (250 sheets via Main Tray + 100 sheets via MPT)
- **Maximum Input:** 880 sheets (with optional 530-sheet 2nd Paper Tray)
- **Output Capacity:** 150 sheets, face down
- **Paper Types:** Letter, Legal 13/13.5/14, Banner, Executive, A4, A5, A6, B5; Envelopes – C5, DL, Monarch, COM 9, COM 10
- **Paper Weight:** Main Tray/Opt. 2nd Tray 17 lb. bond – 65 lb. cover (64–176 gsm); RADF 16 lb. – 28 lb. bond (60–105 gsm); MPT 17 lb. bond – 80 lb. cover (64–220 gsm)

Environmental

- **Size (WxDxH):** 16.8" x 20" x 17.5" (42.7 cm x 50.9 cm x 44.4 cm)
- **Weight:** 63 lb. (29 kg), including consumables
- **Power Consumption:** Operating Normal 500W; Max 1170W; Idle 100W; Power Save 20W; Deep Sleep <1.5W
- **Acoustic Noise:** Printing 52 dB; Copying 54 dB; Standby 37.0 dB; Power Save – Inaudible
- **ENERGY STAR[®] Compliance:** Yes

Warranty

- **System:** 1-Year limited warranty with Overnight Exchange³
- **Digital LED Printheads:** 5-Year limited warranty

¹ Published performance results based on laboratory testing of simplex sheet (1 side). Individual results may vary.

² Based on ITU-T Test Chart #1.

³ Available in the U.S. and Canada only.

⁴ Based on ISO 19798. Units ship with full set of 1,000-page toner cartridges (CMYK).

⁵ Estimated life, based on 3 pages per job.

Ordering Information

Description	Part Numbers	
MC361 Color MFP, 120V (Multilingual)	62435901	
MC361 Color MFP, 230V (Multilingual)	62435902	
Options		
530-Sheet 2nd Paper Tray	44472101	
256 MB DIMM	70061801	
512 MB DIMM	70061901	
Supplies		
Toner Cartridges:		
Cyan Toner Cartridge	3,000 pg. ⁴	44469703
Magenta Toner Cartridge	3,000 pg. ⁴	44469702
Yellow Toner Cartridge	3,000 pg. ⁴	44469701
Black Toner Cartridge	3,500 pg. ⁴	44469801
Image Drum:		
Single Image Drum (CMYK)	20,000 pg. ⁵	44494201
OKIcare[®] Overnight Exchange Warranties³		
	U.S.	Canada
MC361 MFP 2-Year Warranty	38021002	38021012
MC361 MFP 3-Year Warranty	38021003	38021013
MC361 MFP Upgrade/On-Site	38021101	38021111
OKIcare On-Site Warranties³		
MC361 MFP 2-Year On-Site	38021102	38021112
MC361 MFP 3-Year On-Site	38021103	38021113
Print Media		
Sheets Per Box		
Bright White Proofing Sheets: 8.5" x 11" (32 lb.)	500	52206101
SynFlex [™] Paper (8.5" x 11" – Waterproof and Tear-resistant)	100	52205901
Premium Envelopes (size #10):	100	52206301
	500	52206302
Banner Paper (8.5" x 35.4")	100	52206002

For more information

on the MC361 MFP Color Multifunction Product and supplies—including OKIcare[®] warranty extensions—please call, toll free, **1.800.OKI.DATA** (800.654.3282)³ or visit our website: www.okiprintingsolutions.com/us

Specifications are subject to change without notice.

Featured products may not be available in all countries. Please contact your local office for regional availability.

©2010 OKI Data Americas, Inc. OKI Reg. T.M., M.D., OKI Electric Industry Co., Ltd. Single Pass Color T.M. and design Reg. T.M., High Definition Color logo T.M., OKI Data Corp. SynFlex T.M., OKI Data Americas, Inc. PCL Reg. T.M., Hewlett Packard Co. PostScript Reg. T.M., PostScript 3 T.M., Adobe Systems, Inc. Windows, Vista Reg. T.M., Microsoft Corp. Mac Reg. T.M., Apple, Inc. Nuance, PaperPort, OmniPage Reg. T.M., Nuance Communications, Inc. USB-IF T.M., Universal Serial Bus Implementers Forum, Inc. ENERGY STAR Reg. T.M., U.S. EPA



OKI DATA AMERICAS, INC.

USA
2000 BISHOPS GATE BLVD.
MOUNT LAUREL, NJ 08054-4620
TEL: 800.OKI.DATA (800.654.3282)
FAX: 856.222.5320

CANADA
4140B SLADEVIEW CRESCENT
UNITS 7 & 8
MISSISSAUGA, ONTARIO L5L 6A1
TEL: 905.608.5000
FAX: 905.608.5040

LATIN AMERICA
2000 BISHOPS GATE BLVD.
MOUNT LAUREL, NJ 08054-4620
TEL: 856.231.0002
FAX: 856.222.5071

OKI DATA DE MÉXICO, S.A. DE C.V.
MARIANO ESCOBEDO, 748 8^º PISO
COL. NUEVA ANZURES C.P. 11590
MÉXICO, D.F.
TEL: 55.5263.8780
FAX: 55.5250.3501

OKI DATA DO BRASIL INFORMÁTICA LTDA.
AV. ALFREDO EGÍDIO DE SOUZA ARANHA, 100
BLOCO C – 4^º ANDAR
04726-170 – SÃO PAULO – SP – BRASIL
TEL: 11.3444.3500
FAX: 11.3444.3502

WWW.OKIPRINTINGSOLUTIONS.COM